

Requirements for the pre-installation of PassportScan SQL

Server Side:

Create a shared folder named **file_passportscan** with W/R access (it must be accessible by all the clients).

Download the following files and save them in the **file_passportscan** folder.

SQL Server 2008 R2 (32/64 depending on the operating system; the version has to be in the same language as the installed operating system)

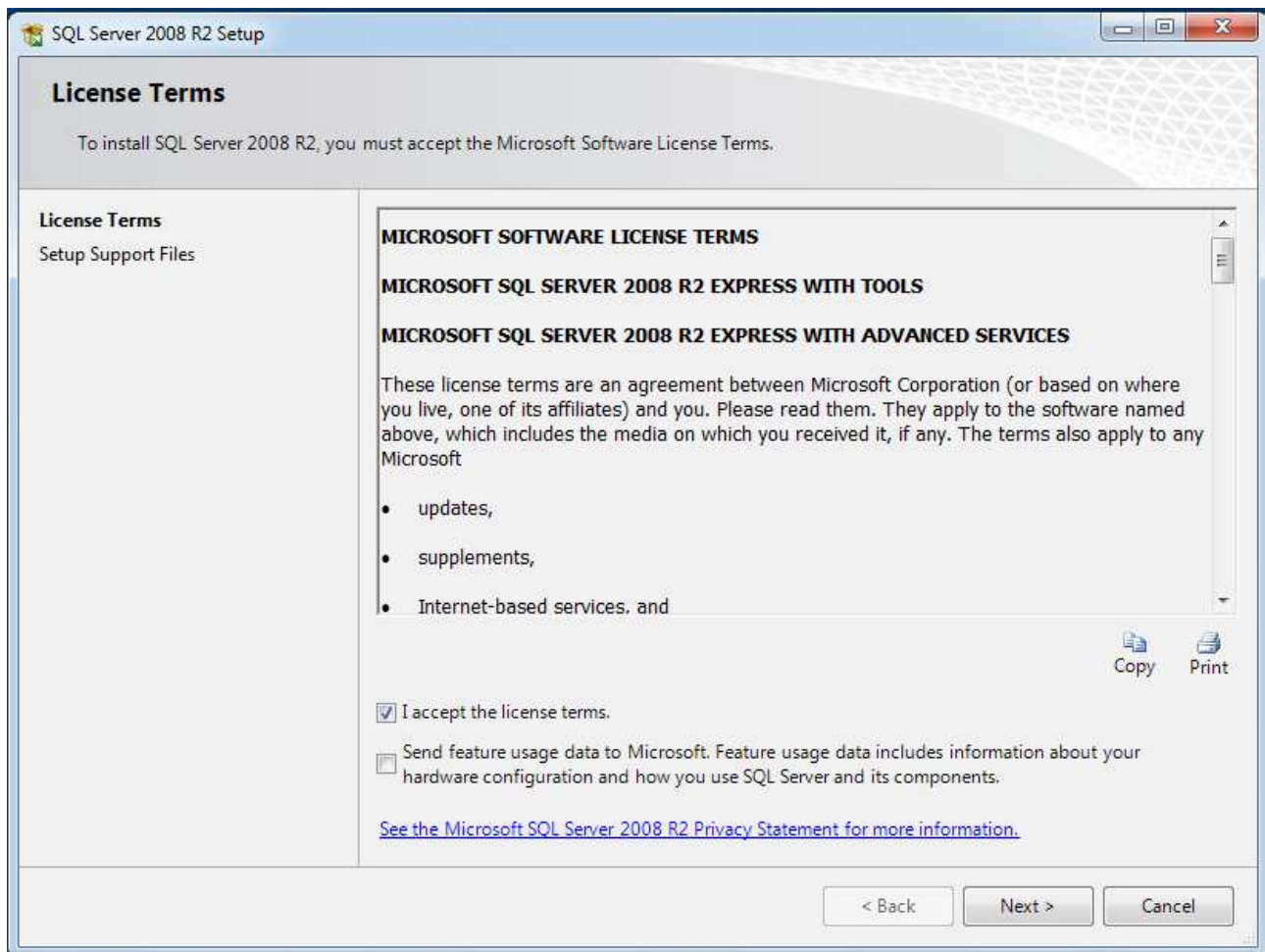
32 Bit Version: <https://www.microsoft.com/betaexperience/pd/SQLEXPDBMT32/enus/>

64 Bit Version: <https://www.microsoft.com/betaexperience/pd/SQLEXPDBMT64/enus/>

Passportscan Setup: http://www.passportscan.net/Application/PassportScan_setup.exe

Support: <http://www.passportscan.net/Application/support.exe>

Install SQL Server 2008 (mix mode)



SQL Server 2008 R2 Setup

Feature Selection

Select the Express with Advanced Services features to install.

Setup Support Rules

Feature Selection

Installation Rules

Instance Configuration

Disk Space Requirements

Server Configuration

Database Engine Configuration

Error Reporting

Installation Configuration Rules

Installation Progress

Complete

Features:

Instance Features

- Database Engine Services
 - SQL Server Replication

Shared Features

- Management Tools - Basic
- SQL Client Connectivity SDK

Redistributable Features

Description:

Server features are instance-aware and have their own registry hives. They support multiple instances on a computer.

Select All Unselect All

Shared feature directory: ...

< Back Next > Cancel Help

SQL Server 2008 R2 Setup

Instance Configuration

Specify the name and instance ID for the instance of SQL Server. Instance ID becomes part of the installation path.

Setup Support Rules

Feature Selection

Installation Rules

Instance Configuration

Disk Space Requirements

Server Configuration

Database Engine Configuration

Error Reporting

Installation Configuration Rules

Installation Progress

Complete

Default instance

Named instance:

Instance ID:

Instance root directory: ...

SQL Server directory:

Installed instances:

Instance Name	Instance ID	Features	Edition	Version

< Back Next > Cancel Help

SQL Server 2008 R2 Setup

Server Configuration

Specify the service accounts and collation configuration.

- Setup Support Rules
- Feature Selection
- Installation Rules
- Instance Configuration
- Disk Space Requirements
- Server Configuration**
- Database Engine Configuration
- Error Reporting
- Installation Configuration Rules
- Installation Progress
- Complete

Service Accounts | Collation

Microsoft recommends that you use a separate account for each SQL Server service.

Service	Account Name	Password	Startup Type
SQL Server Database Engine	NT AUTHORITY\NETW...		Automatic ▼
SQL Server Browser	NT AUTHORITY\LOCA...		Disabled ▼

Use the same account for all SQL Server services

< Back Next > Cancel Help

SQL Server 2008 R2 Setup

Database Engine Configuration

Specify Database Engine authentication security mode, administrators and data directories.

- Setup Support Rules
- Feature Selection
- Installation Rules
- Instance Configuration
- Disk Space Requirements
- Server Configuration
- Database Engine Configuration**
- Error Reporting
- Installation Configuration Rules
- Installation Progress
- Complete

Account Provisioning | Data Directories | FILESTREAM

Specify the authentication mode and administrators for the Database Engine.

Authentication Mode _____

Windows authentication mode

Mixed Mode (SQL Server authentication and Windows authentication)

Specify the password for the SQL Server system administrator (sa) account. _____

Enter password: ●●●●●●

Confirm password: ●●●●●●

Specify SQL Server administrators _____

WIN-BSKS749TT5V\CLAUDIO (CLAUDIO)

SQL Server administrators have unrestricted access to the Database Engine.

Add Current User Add... Remove

< Back Next > Cancel Help

Create a database named **Passportscan**

Create a user **ps** password **1q2w3e4r** with admin access and connected to the passportscan database

Validate TCP/IP protocol in the SQL server Configuration Manager.

Client Side:

Execute passportscan_setup from **file_passportscan** folder, previously shared on the server

Execute setup for the Fujitsu driver: *C:\Programm files\passportscan\extra\fujitsu fi60f driver*

Execute setup for native client 2005: *C:\Programm files\passportscan\extra\native client 2005*

C:\Programm files\passportscan **this folder mast have full access (R/W)**

Minimum Server Requirements Windows Server 2003 / 2008 AMD/Intel Processor RAM 2GB	Requirements FireWall TeamViewer Support.exe port 80 Passportscan.exe, http://www.passportscan.net port 80 AddressValidationEngine, http://maps.googleapis.com port 80
Minimum Client Requireents Windows XP/Vista/7 AMD/Intel Processor RAM 1GB	IP 8.6.95.220 port 80 (SDK Licenze)



SUITE B, 29 HARLEY STREET
W1G 9QR LONDON (UK)
Tel +44 207558 8716
Fax +44 2078550825
support@passportscan.net
www.passportscan.net